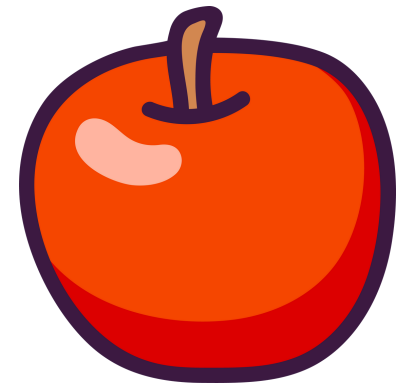




LIS



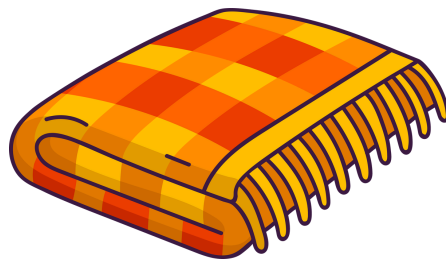
SWETER



JABŁKO



DYNIA



KOC



GRZYB



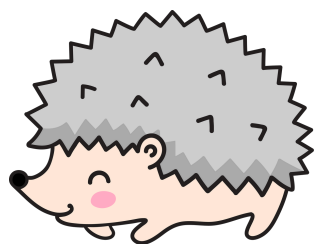
PARASOL



KALOSZE



LIŚĆ



JEŹ



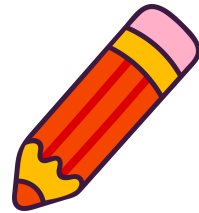
ŻOŁĘDŹ



CHMURA



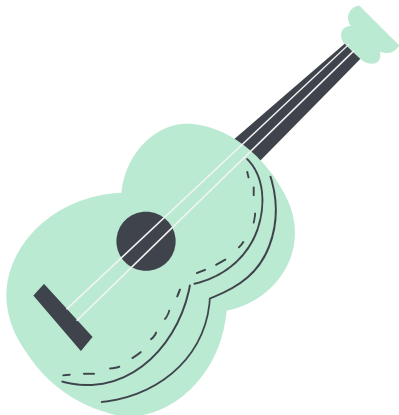
ŚLIMAK



OŁÓWEK



CIASTO



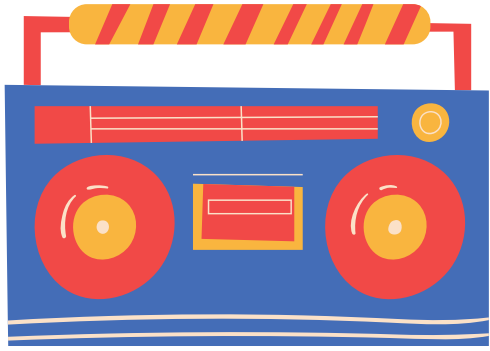
GITARA



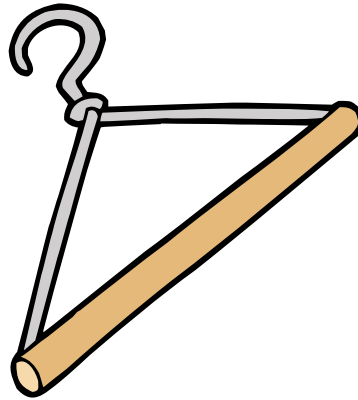
KAKTUS



PREZENT



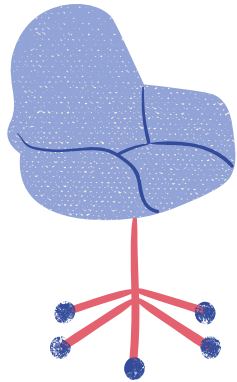
RADIO



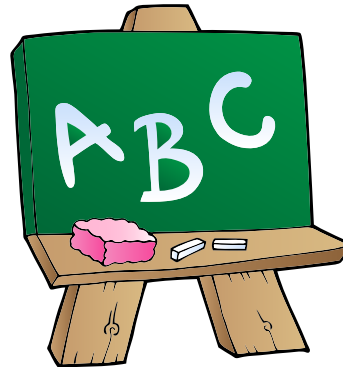
WIESZAK



NIEDŹWIEDŹ
POLARNY



KRZESŁO



TABLICA



KUBEK